

CALPICO INC.

D.R. SHANNON CO.

Filters, Tools & Gloves
23407 PACIFIC HIGHWAY SO., DES MOINES, IA 50319
(202) 624-3308

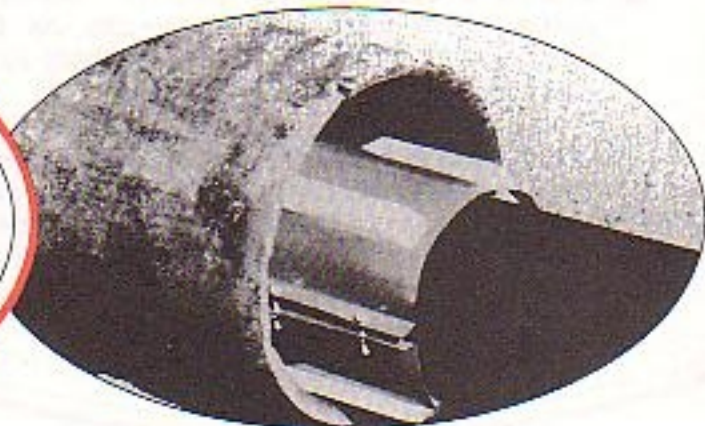
THE MODEL M SERIES

These heavy duty insulators are ideal to keep carrier pipe isolated from casing.

- Steel bands are 14 gauge (other gauges are available).
- Skids are bolted to the band.
- Bolting flanges are provided with gussets for extra strength.
- An extra heavy duty vinyl liner assures double insulation.
- Skids are available in polyethylene and phenolic.

THE MODEL M INSULATOR IS AVAILABLE IN THREE SIZES:

- MODEL M-12—band 12" wide
- MODEL M-8—8" wide
- MODEL M-6—6" wide



Standard Specifications *

STEEL BAND: 14" gauge (.074" thickness) with a rust-resisting coating.

FLANGE BOLTS: 5/16" cadmium plated — 5 on M-12; 3 on M-8; 2 on M-6.

INSULATING LINER: Heavy-duty PVC with extra-heavy retaining edge.

SKIDS: Heavy-duty skids are standard. For pipe sizes up to 14 inches, there are 4 skids on each insulator. From 16 through 36", 6 skids are standard. Pipe sizes of 38" and larger have 6 skids. Additional skids can be specified. Standard skids are 1 1/4" wide and 1 1/4" high. Skids 2" high and higher can also be supplied on request.

For ductile iron, cast iron, asbestos cement, reinforced concrete pipe, Vitrified clay pipe, we make the skids higher so the skids extend beyond the OD of the bell or coupling. This takes the pressure off the coupling or bell when going through the casing.

*Other materials and dimensions other than those shown above are available.