

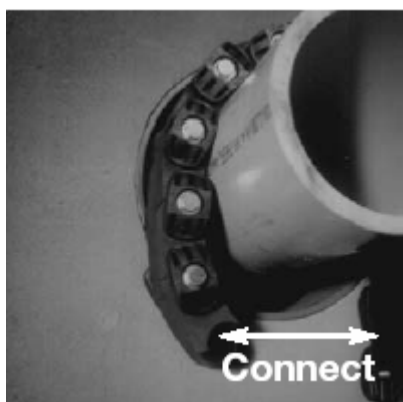
Calpico Pipe Linx Installation Instructions



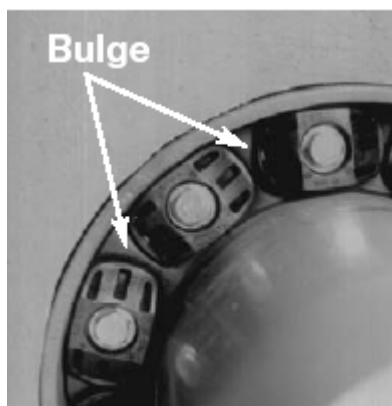
1. Center the pipe in the wall opening or casing, Make sure the pipe is adequately supported on both ends. Pipe Linx are not designed to support the pipe.



5. Start at 12 o'clock position and tighten bolt until rubber begins to bulge. Do not tighten any more than 4 turns at a time. Continue clockwise until Linx have been uniformly compressed.



2. Loosen rear pressure plate with nut just enough so Linx move freely. Connect both ends of belt around pipe.



6. Make 2 or 3 more passes at 4 turns per bolt MAXIMUM, tighten all bolts clockwise until all sealing elements bulge around pressure plates.



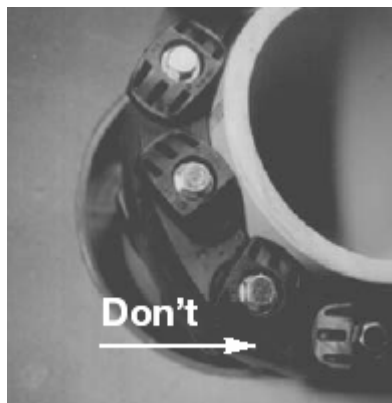
3. Check to make sure all bolt heads are facing the installer. Extra slack or sag is normal Do not remove extra Linx if slack exists.



7. If the seal doesn't appear to be correct per instructions provided, call DR Shannon at 800-255-1032.



4. Slide belt assembly into annular space. For tight fitting installations, start at the 6 o'clock position and work both sides up to the 12 o'clock position.



- Don't use high speed power tools (450 rpm or less)
- Don't install pressure plates crooked (see picture)
- Don't tighten completely all at once.